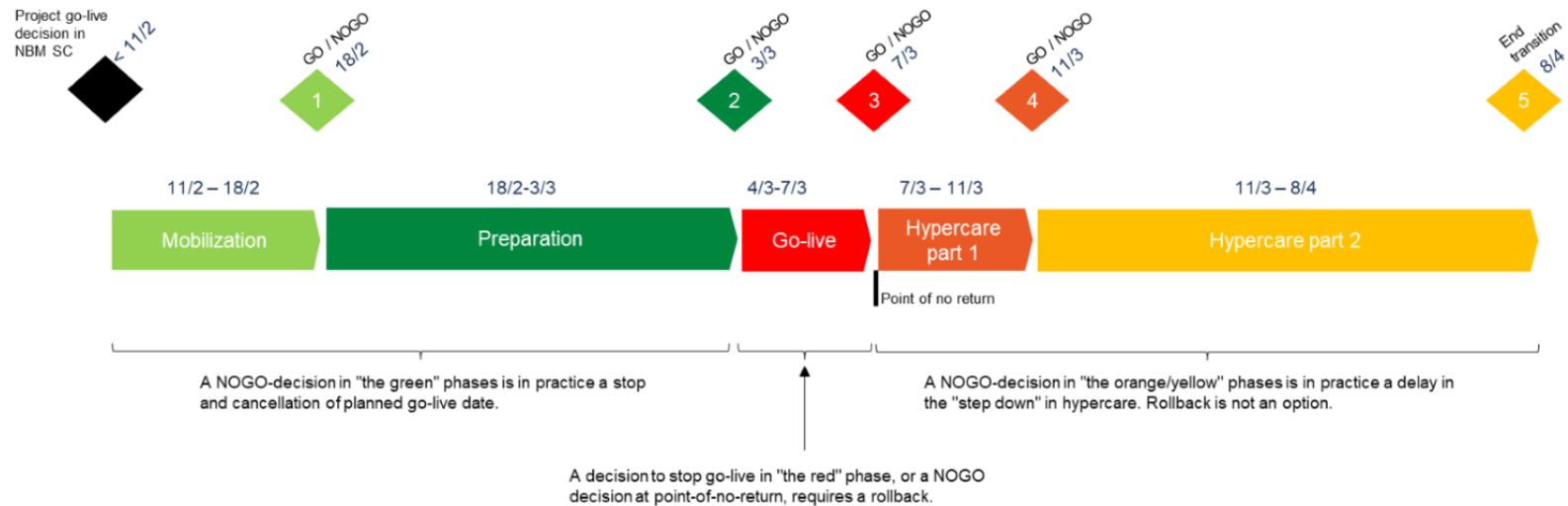


SVENSKA KRAFTNÄT

BSP Go-live for mFRR EAM

241007

TSO go-live phases



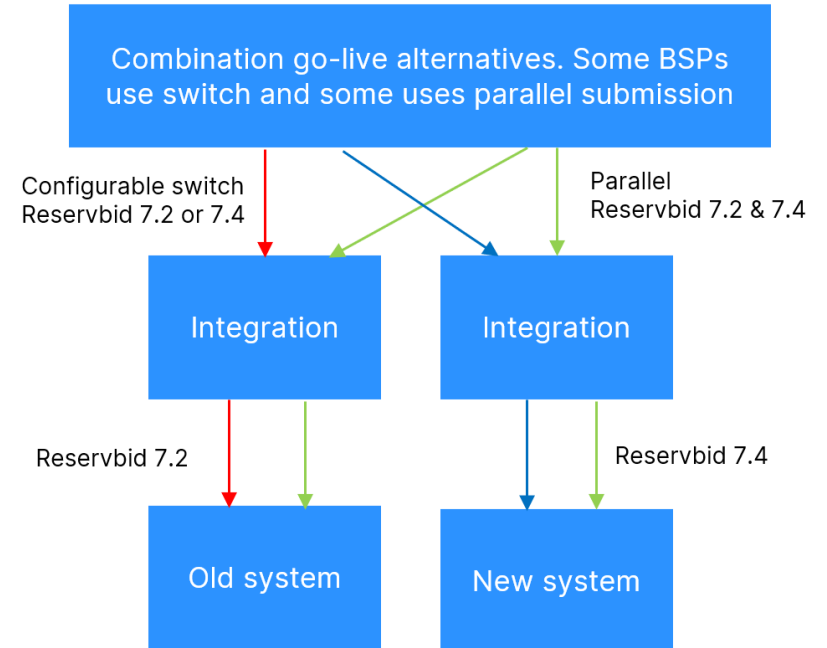
Go-live phase

- Go-live day: Tuesday 4th of March
- If we fail on the 4th, alternative go-live day: Thursday 6th of March and Tuesday 11th of March.
- First AOF run 13:00
 - Meaning first electronic ordering to be expected at 12:52:30
 - Activations from MMS can be sent out until 12:45 with end time 13:00
 - Last possible *kvartsaffär* between 12:45 – 13:00 (by phone)

Note that the AOF is running in parallel before 13:00, so don't use bid attributes such that the bids in MTU 13:00-13:15 have dependencies to bids in earlier MTUs.

Bid submission


- Supporting parallel approach and switch
- Main solution parallel. Exemption possible if BSP:
 - Is active in different TSO areas with another solution
 - Does not have a significant market share

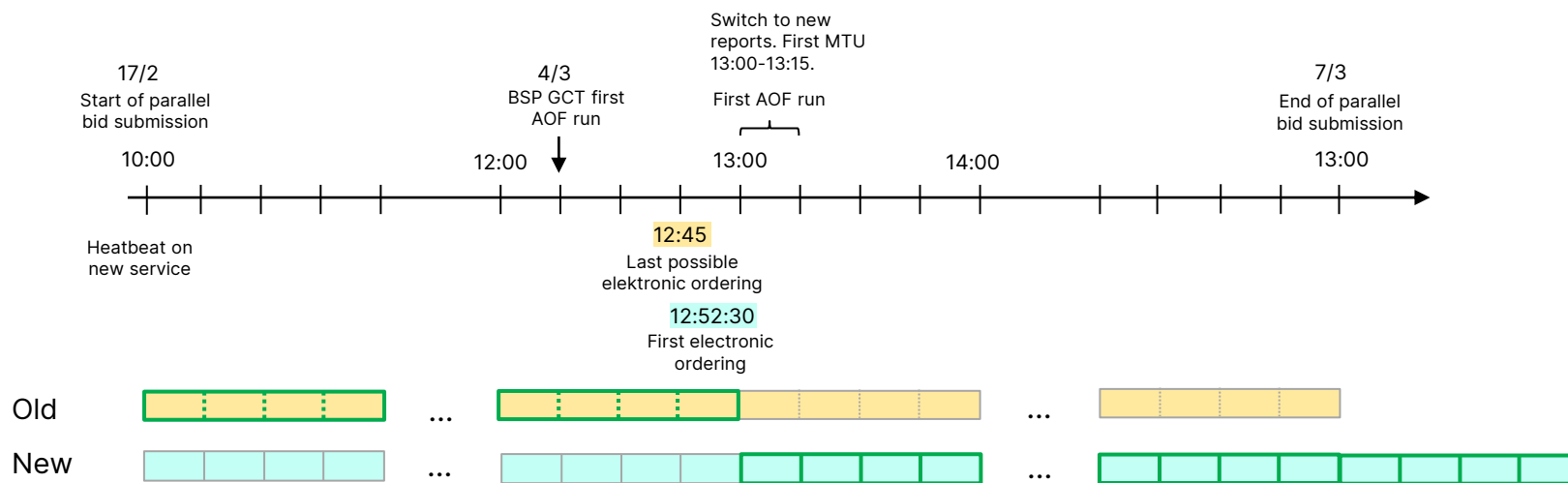


Parallel bid submission

- Start parallel bidding two weeks before
 - Continue until point of no return 7/3 kl. 13
 - Two tabs will be available in parallel in fiftyweb (as in test)
- We will not send out activations from both systems in parallel
 - Preferably that you use the activations from the service that we are currently sending from → no need for a switch at go-live or rollback
- Heartbeat moved to new service at the same time as we start parallel bidding (17/2)
 - Heartbeats and activations will be sent out from different services

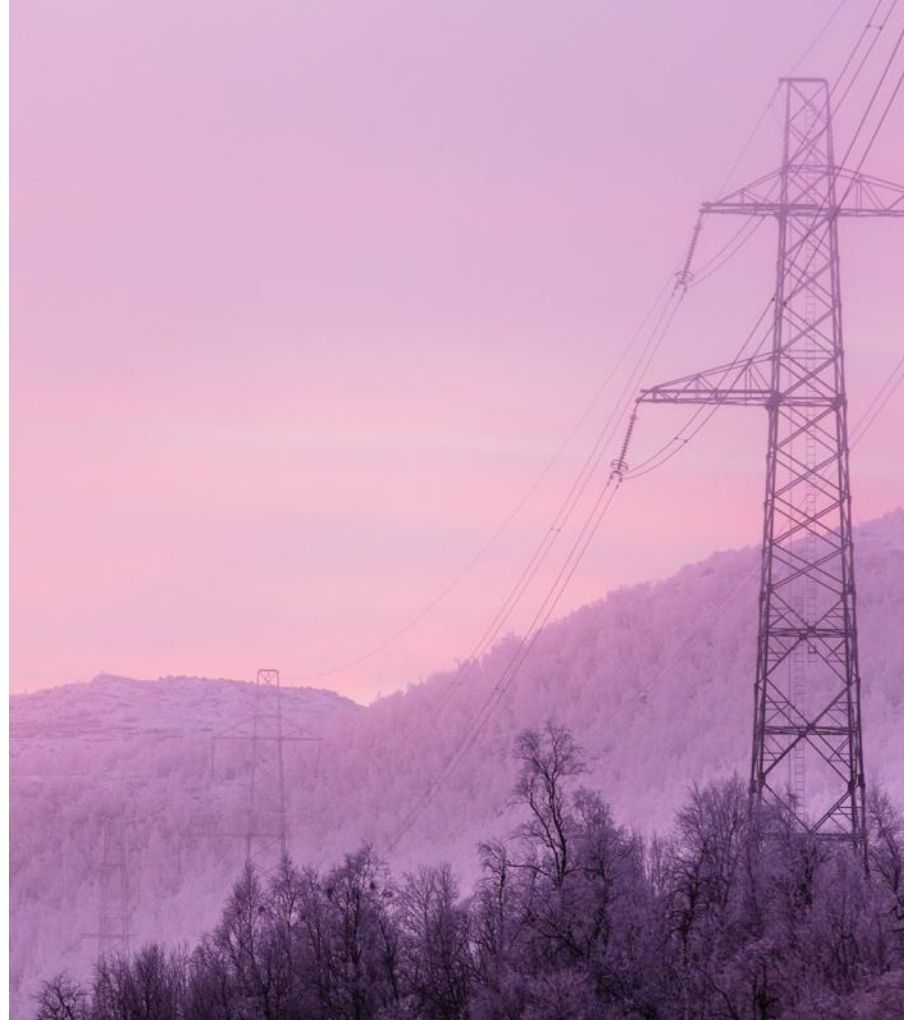
Parallel bid submission

 Bids eligible for electronic ordering




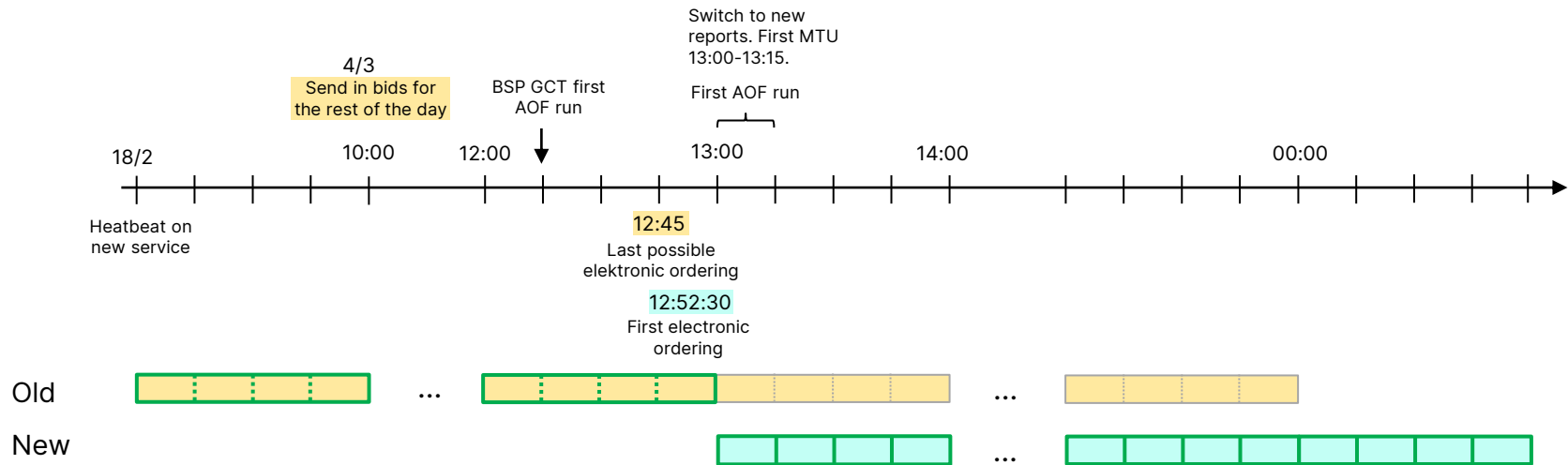
Hard switch

- Configurable switch to start receiving activations from new service
- Can use fiftyweb for bid submission before GCT and have one switch for both bidding and activations
- Heartbeat moved to new service at the same time as we start parallel bidding (17/2)
 - Heartbeats and activations will be sent out from different services



Hard switch

 Bids eligible for electronic ordering



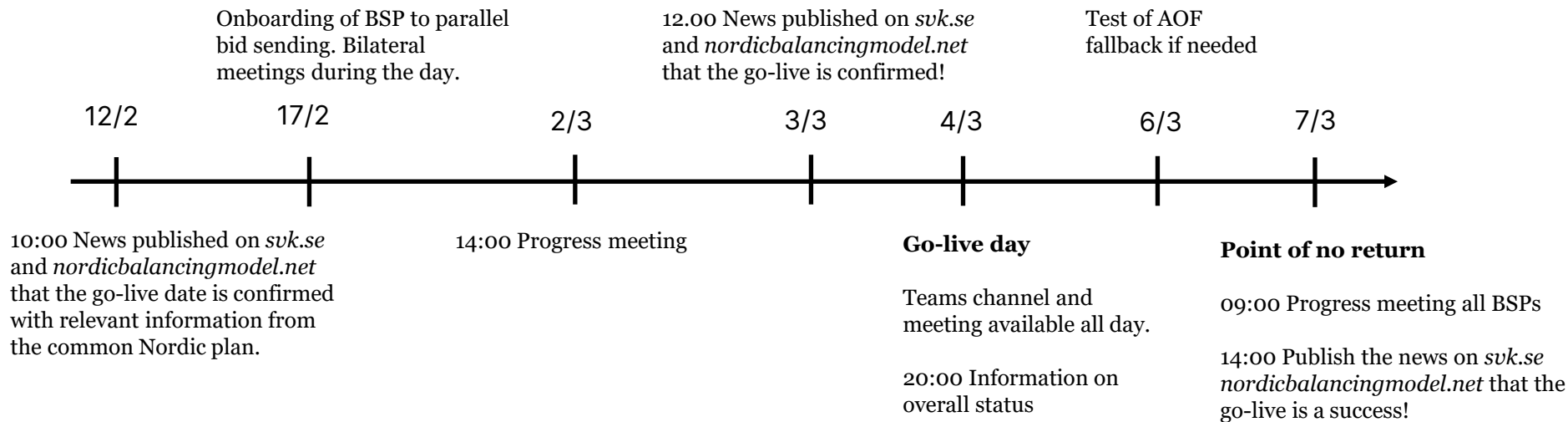
Rollback

- Rollback is a joint decision for all nordic TSOs.
- Possible until point of no return 7/3 kl. 13.
- A rollback should be possible within 3 hours from when the decision is made.
- A rollback means to go back to manual frequency based balancing.
- You need to be able to receive activations in old system again in this period.
- Rollback can be done at any time, does not need to be from a whole hour
- 5 min heartbeat will continue to be sent from new service after a rollback.

Staffing

- Svk will have additional staffing 24/7 on site for at least hypercare one.
 - Ready to handle incidents and to coordinate a rollback.
- During go-live 4th of March we would expect people in place later in the evening, we will distribute information to all BSPs on the overall status of the go-live at 20.00.
- From the 4th to the 7th of March we will need all relevant roles on call.
 - Ready to handle incidents and to do a rollback.
- Relevant roles: Secondline, firstline, applikation-support, ECP-support, operator
 - Expected response time: 30 min

Information during go-live



Thank you!

mFRR@svk.se